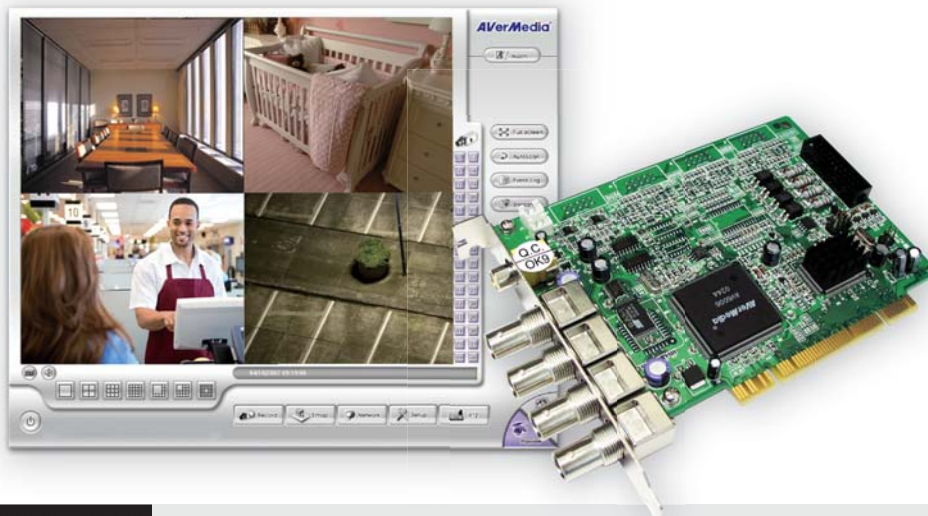


# NV3000 Hybrid Windows Capture Card

**3 Year  
Warranty!**



## Model Number(s):

- NV3000 - Windows Solution

## Key Points:

- 1 Channel IP camera support
- Supports 60+ brands of IP cameras
- Windows 7, XP, Vista (all 32 bit)
- Wide screen support: 1440x900, 1680x1050, 1920x1200, 1920x1080
- D1 resolution
- Stack up to 16 channels
- Easy DVR & IP Camera support upgrades through USB flash drive
- Advanced alarm management
- *Comprehensive remote access through iPhone, Blackberry and web*



The AVerMedia NV3000 is a low cost entry-level **4 channel capture card** perfect for residential, gas station and small business installations. It offers many features such as 1 channel IP support, D1 resolution, AVerMedia's award winning software, robust remote video access (iPhone and Blackberry approved) and is fully supported by AVerMedia's US based technical team.

Coupled with free ongoing software upgrades, ability to add channels by stacking up to 4 NV3000s and a 3 year warranty, the NV3000 ensures easy, efficient and effective security.

## SYSTEM

- 352x240 (CIF), 640x480(VGA), 720x240 (Half-D1), 720x480 (D1) resolutions
- Supports 60+ IP camera brands
- Compatible with up to 5 MegaPixel IP camera(s) (check support list for integrated camera model numbers)
- IP and Analog camera Pan-Tilt-Zoom enabled
- Supports up to 1920 x 1200 wide screen resolutions
- Video compression: Software H.264, MPEG4 and MJPEG
- Uncomplicated system and/or IP camera support updates through USB drives
- Virtual keyboard built-in and support's UPS

## CONFIGURATION

- Pre-schedule many system functionalities including recording, backup, reboot, alarm and relay controls as a one-time or recurring weekly task
- Save time on multiple system setups by simply exporting and importing system configuration settings

# CAPABILITIES

## MONITORING

For environments that depend on live video, the NV3000 offers many features for fast and responsive event management:

- Video - 4 analog (BNC Connectors) and 1 IP camera
- Audio (optional) - 1 channel input and 1 channel output
- 4 sensors & relays (optional)
- E-maps (8) showcasing camera, sensor and relay positions
- Simultaneously view live video during playback
- Integrated Auto Gain Control (AGC) balances image noise
- View and record in total darkness with built-in "Night View" functionality EVEN for day-only cameras
- "Attention Please" feature helps operator performance

### *Live Display*

- Award winning Graphical User Interface (GUI) with:
  - Advanced GUI mode for easy access to system tools
  - Compact GUI mode for maximum image display
- Channel Auto scan with 1, 4, 8, 9, 13 & 16 screen splits
- Digital zoom incorporated for greater detail in live video

### *Alarm/Notifications*

The NV3000 is ready for real-time incident response by:

- Starting video recording on multiple cameras
- Sending footage to spot monitor
- Enabling camera PTZ tracking and enlarging triggered video
- Following sensor with relay protocols (e.g. locking gates etc.)
- Launching the triggered channel's corresponding Emap
- Sending emails, snapshots and files to FTP, SMS/MMS
- Making a phone call or playing customizable warning sounds
- Sending video to Central Management System
- Displaying standard operating protocols to ensure proper adherence to procedures by security personnel
- Including manual on screen alarm trigger for emergencies
- Alarms can be reset both locally and remotely

## INTELLIGENCE

To reduce security staffing and/or to manage high-volume video, the NV3000 also provides intelligence that is triggered by:

- Motion Detection, sensor inputs and POS events
- Objects left or removed from monitored zones
- Video loss or HDD failure; initiates "Watchdog" function if needed to bring system back from faulty to normal operation
- Controlling false alarms by combining multiple alarm inputs to validate genuine events

## RECORDING

Once the system is triggered and starts recording, it can continue to do so without time limitations. Additional features:

- Continuous, Motion, Event, or Audio recording
- Smart - Activity based escalation of recording fps (low - high)
- Video mask - prevent high activity regions from triggering motion based recording
- System will auto recycle storage space when disk is full
- Two types of de-interlace method: optimized for static scenes or dynamic scenes

## FORENSICS

For rapid retrieval/export of pertinent data:

### *Search*

- Defined parameter search by date, time, camera, area, event, and event log file
- AVerMedia patented Visual Search that visually breaks down video by day, hour, minute, 10 seconds and second
- Time search to scroll through by moments
- FaceFinder software - catalogs human faces from live video to facilitate quick searches based on facial recognition
- Easy retrieval and playback of footage by "Bookmarking" significant segments
- Advanced event log search by event, operation, POS, system and network activities

### *Playback*

- Simultaneously view playback while recording and/or performing network functions.
- Built-in sensitive playback controls (including frame-by-frame)
- Digital zoom incorporated for greater detail in playback video

### *Backup*

- Based on chosen system, easily export/backup to DVR-RW/ CD-RW, flash memory, external HDD, NAS, SAN and RAID
- Export single images to BMP files or segments to AVI files
- Saved images are "Watermarked" to validate authenticity

## POS INTEGRATION

- POS connection available on every channel along with iPOS function that allows transaction data searches and video playback right from the live monitoring screen
- Compatible with most commonly used POS systems
- To protect against employee tampering, system is integrated with a confidential key word filter
- POS keywords can be set to trigger alarms and notifications
- POS text location can be customized on video footage

# CAPABILITIES

## REMOTE

### *Multicasting*

- iDispatch - For high-traffic video broadcasting, the NV3000 will multicast video streams to drastically lower network, server and camera loads for effective remote viewing

### *Setup and configuration*

- iSetup is bundled to make system changes remotely
- Remote backup capability is included with the NV3000

### *Viewing*

From laptops, cell phones, PDAs and more, you can track video whenever and wherever

- Remote Access with DDNS function
  - **Web/Remote Computers:**  
Internet Explorer WebViewer (view Live video with 2-way audio)  
Remote Console (view Live/Recorded video and control PTZ, setup, E-maps, recording, playback, sensors/relays)
  - **Windows mobile devices:**  
SmartViewer (view Live video)  
PDAViewer (view Live/Recorded video, store multiple DVR log-ins, control PTZ, zoom and take video snapshots)
  - **Blackberry mobile devices:**  
iBBViewer (view Live video)
  - **iPhone mobile devices:**  
iViewer (view Live video)

### *Multiple Systems*

- With CM3000 central management software, you have total remote command of up to 1000 remote systems from one central location
  - Monitor with E-maps, record and playback
  - Control sensors and relays
  - Setup and modify DVR configurations
  - 2-way audio

## USER ACCESS

- Up to 256 user accounts with individually assigned passwords and user privileges
- User accounts can be set to activate or expire at specified dates

# SPECIFICATIONS

## NV3000 Detailed Specifications

Unit						
Operating system		Windows XP / Vista 32bit / Win 7				
Compression		Software: H.246/MPEG4/MJPEG				
Interface		PCI				
		Stacked:	<b>1 Card</b> (4 total chs)	<b>2 Cards</b> (8 total chs)	<b>3 Cards</b> (12 total chs)	<b>4 Cards</b> (16 total chs)
Video Inputs	Analog	BNC	4	8	12	16
	IP	Data Streams	1 - H.264/MPEG4/MJPEG Format			
Video Out		TV Out - RCA x1				
Video Format	Analog	NTSC: 352x240 (CIF), 640x480 (VGA), 720x240 (Half-D1), 720x480 (D1)				
	IP	IP/Megapixel Camera Specific				
		Stacked:	<b>1 Card</b>	<b>2 Cards</b>	<b>3 Cards</b>	<b>4 Cards</b>
Recording Rates	Analog	CIF	30	60	90	120
		D1	12	24	36	48
	IP	Per camera specifications				
		Stacked:	<b>1 Card</b>	<b>2 Cards</b>	<b>3 Cards</b>	<b>4 Cards</b>
Audio	In/Out	1/1	2/1	3/1	4/1	
Alarms/Relays	In/Out	4/3	8/6	12/9	16/12	
Supported IP cameras (support IP PTZ, IP IO, & IP audio if IP cameras built-in)	AXIS, Panasonic, SONY, Arecont, Mobotix, BOSCH, IQinvision, JVC, TOSHIBA, VIVOTEK, ACTi, D-Link, PIXORD, PELCO, Apron, Lilin and more					
Browser/Remote Client	MS Internet Explorer 6+, Windows 2000, XP, VISTA,					

Software	
Interface	Graphical user Interface
Account Administration	Up to 256 accounts with configurable user privileges
Camera Administration	Add and configure all supported IP/Megapixel cameras through the GUI.
PTZ Control	Zoom-in/Zoom-out, Focus-in/Focus-out, Direction, Speed, Preset point, Autopan.
Playback Administration	Playback while recording or setup
	Play, rewind, fast-forward, frame-by-frame control
	Digitally zoom to specific regions on recorded video
	Export single frame to .jpg, export video clip to DVR/.AVI/.MPEG
Motion Detection	Configurable to sense mass/motion; can partition off areas in monitoring regions from motion triggers
Event Recording	Schedule: Continuous, Smart, Motion, Alarm, Manual
Video Event Search	Visual Search, date/time, camera, event & log files
Advanced Event Log	Full event, operation, system & network activities log
Alarm Notifications	Launch or send E-map, relay, video capture, CM3000 or E-mail notification
E-map Display	Positions of cameras, sensors, relays and event status
iEnhance	Enhance video quality such as Brightness/Contrast/Hue/ Saturation/ Sharpness/ Noise Reduction/De-interlace/ Gray Scale of recorded video
iStable	One-click fix for shaky video caused by camera movement (such as wind or vandalism)
Remote Management	
Central Management	CM3000 software - supports up to 1000 DVRs
Remote DVR connectivity	Remote Computers: Use WebViewer (MS Internet Explorer only) or Remote Console
	Windows Mobiles: Use SmartViewer or PDAViewer
	Blackberry Mobiles: Use iBBViewer
	iPhones Mobiles: Use iViewer
Dispatch Server	Balance NVR communication for added client access and greater data transfer speeds
DDNS	Allow remote clients to search dynamic servers without enquiring for server's IP address
Warranty	
3 Year Limited Parts and Labor	

## NV Series Quick Comparison

4 CHANNELS

8 CHANNELS

16 CHANNELS

### NV3000

### NV5000

	NV3000	NV5000
PCI Slot	PCI Slot	PCI Slot
Video Input	4 Channels	4 Channels
Total IP camera Per Card	<b>1</b>	<b>4</b>
Compression Method	Software H.264, MPEG4, MJPEG	Software H.264, MPEG4, MJPEG
Audio Input	<b>1 Channel (optional)</b>	<b>4 Channels (optional)</b>
CIF Recording Rate FPS	<b>30 fps/4 CHs</b>	<b>120 fps/4 CHs</b>
D1 Recording Rate FPS	<b>12 fps/4 CHs</b>	<b>120 fps/4 CHs</b>
Alarms/Relays (In/Out)	4/3	4/4
Stacking Structure	Stack up to <b>4 NV3000s</b>	Stack up to <b>2 NV5000s</b>
Use of Extension Cards	<b>No</b>	<b>Yes (Max of 3)</b>
TV out	Yes	Yes
Video Management Software	Included	Included

### NV6240E8

	NV6240E8
PCI Slot	PCI Express Slot
Video Input	8 Channels
Total IP camera Per Card	8
Compression Method	Software H.264, MPEG4
Audio Input	8 Channels
CIF Recording Rate FPS	240fps/8 CHs
D1 Recording Rate FPS	240fps/8 CHs
Alarms/Relays (In/Out)	4/4
Stacking Structure	Stack up to 2 NV6240E8
Use of Extension Cards	No
TV out	Yes
Video Management Software	Included

### NV6240E16

### NV6480E16

### NV8416E4

	NV6240E16	NV6480E16	NV8416E4
PCI Slot	<b>PCI Express Slot</b>	<b>PCI Express Slot</b>	<b>PCI Express x 4 Slot</b>
Video Input	16 Channels	16 Channels	16 Channels
Total IP camera Per Card	16	16	16
Compression Method	Software H.264, MPEG4	Software H.264, MPEG4	Software H.264, MPEG4
Audio Input	16 Channels	16 Channels	16 Channels
CIF Recording Rate FPS	<b>240fps/16 CHs</b>	<b>480 fps/16 CHs</b>	<b>480 fps/16 CHs</b>
D1 Recording Rate FPS	<b>80fps/16 CHs</b>	<b>160 fps/16 CHs</b>	<b>480 fps/16 CHs</b>
Alarms/Relays (In/Out)	4/4	4/4	4/4
Stacking Structure	Stack up to 2 NV6240E16	Stack up to 2 NV6480E16	Stack up to 2 NV8416E4
Use of Extension Cards	No	No	No
TV out	Yes	Yes	Yes
Video Management Software	Included	Included	Included

# RECOMMENDATIONS

## NV3000 Hardware Recommendation List

### Motherboard

Our products support most of the current Intel chipsets for motherboards. Intel 848, 865, 875, 915, 925, 945, 955, 965, P35, NVIDIA nFORCE4 SLI - Intel Edition, NVIDIA nForce3 250Gb Platform Processor chipsets

Below is a list of Motherboards that our validation labs have tested; however we do support other motherboards beyond the ones listed below

#### Intel Socket

Brand	Asus	Gigabyte	Epox	Intel	FOXCONN	MSI
848	P4P800 SE					
865	P4P800	GA-8IPE1000				
	P4P800-VM	GA-8IG1000Pro-G				
	P4P8X	GA-8IPE1000-G (Rev 3.1)				
	P5P800					
875	P4C800	GA-8IK1100				875P Neo FISR
		GA-8I875				
915	P5GD1 Pro	GA-8I915G-Duo	EP-5EPA+			915G Combo
925	P5AD2 Premium			D925XCV		915G Combo
945	P5LD2	GA-8I945P-G				
	P5LD2-VM	GA-8I 945G -MF				
	P5PL2-E	GA-945PL-S3 (Rev 2.0)				
		GA-8I945PL-G				
955		GA-8I955X Pro				
		GA-8I955X Royal				
965	P5B Deluxe/ WiFi-AP	GA-965P-DS3P (Rev 3.3)				
		GA-965P-DS3 2.0				
975		GA-G1975X-C				
P31		GA-P31-DS3L				
P35	P5K SE	GA-P35-DS3 (Rev 1.0)			P35A-S	
	P5KR	GA-P35-DS3 (Rev 2.0)				
	P5KC	GA-P35-DS3R (Rev 2.0)				
P45		GA-EP45-DS3L				
X38	P5E					
X58	P6T Deluxe	GA-EX58-UD5 (Rev 1.0)				
NVIDIA nForce4 SLI Intel	P5ND2-SLI Deluxe					

#### AMD Socket

Brand	Gigabyte	ASUS
NVIDIA nForce4 250Gb Platform Processor	GA-K8NSC-939	
nVidia nForce 570 SLI	GA-M57SLI-S4	
NVIDIA nForceR 570 Ultra MCP		M2N-E

### System Requirements:

- **CPU:** Pentium 4 3.0 GHz or higher
- **OS:** Windows 7/XP/Vista/2000 - 32 bit
- **RAM:** 512MB or higher
- **HDD:** 120GB or higher
- **CD-RM/DVD-RM**
- **Graphic Card:** 32-bit high color SVGA graphics card with 128MB video memory and DirectDraw/YUV Rendering Capability
- **10/100 Base-T Ethernet card**
- **Sound card and speaker**

#### Note:

Based on Intel's suggestion, for all of Microsoft Windows XP Operating Systems, Hyper-Threading must be disabled in the system BIOS Setup program for our DVR products.

For the most stable surveillance DVR system, we strongly recommend NOT using VIA/SiS/ALi chipsets and SiS VGA chips with our products due to their severe limitation of the chipset design.

Please make sure you are using the standalone VGA card with 128 MB memory above instead of built-in onboard VGA card in order to ensure the working stability and performance of the NV/NX series software.

We highly recommend against using Samsung Hard Disk Drives for SA, XR and EXR DVR products.

\*Hardware recommendations are the minimum required hardware specifications for running our systems and not a guarantee to achieve the best performance of our DVR systems. Hardware specifications required to achieve the best performance of our DVR systems are subjected to different system settings and operation conditions.

# RECOMMENDATIONS

## NV3000 Hardware Recommendation List (cont.)

### Graphic Card

Our products support most of the current Graphic Chipset on the market today. Below is a list of Graphics Cards that our Validation Labs have tested; however, we do support beyond the hardware listed below. Graphic Cards tested:

#### ATI Chipset

Brand	ATI	Asus	Gigabyte
8500	ATI 8500	A7000	
9700	ATI 9700 Pro		
9800			GV-R98P128D GV-R98X256D
X300		EAX300SE EAX300SE / TD	
X550		EAX550GE	
X700		EAX700 EAX700 / TD / 256M / A	
X800		EAX800 Pro/2DTV	GV-RX70128DE
X1300Pro		EAX1300PRO SILENT TD/256MB/DDR2	
Radeon HD 2400 XT			GV-RX24T256HP/256MB/DDRIII
Radeon HD 2400PRO		EAX2400PRO HTP/256MB/DDR2	
Radeon HD 2600 Pro		GV-RX26P512H/512MB/DDRII	

#### Support ATI:

Radeon 8500 / 9000 / 9200 / 9550 / 9600 / 9700 / 9800 / X300 / X550 / X700 / X800 / X1300PRO / HD2400XT / HD 2400PRO / HD2600PRO

#### Support NVIDIA:

GeForce4 FX / GeForce MX / GeForce FX 5200 / GeForce FX 5600 / GeForce FX 5900 / GeForce 6200 / GeForce 6600 / GeForce 6800 / GeForce 7200 / GeForce 8400GS / GeForce 8500GT

\*Hardware recommendations are the minimum required hardware specifications for running our systems and not a guarantee to achieve the best performance of our DVR systems. Hardware specifications required to achieve the best performance of our DVR systems are subjected to different system settings and operation conditions.

#### Nvidia Chipset (Performance:Basic)

Brand	ASUS	ELSA	Gigabyte	LEADTEK	MSI
GeForce4 FX	ASUS V9480	ELSA 525 ELSA 728	GV-N4464TE	WinFast A170 WinFast A280	
GeForce FX5200			GV-N52128DS		
GeForceFX 5600	ASUS V9560	ELSA 732		WinFAST A310	
GeForceFX 5900		ELSA 935			
GeForce 6200 TC			GV-NX62TC128D GV-NX62TC256D8		
GeForce 6600			GV-NX66128D GV-NX66128DP		NX6600-TD128E
GeForce 6800			GV-NX68256D		
GeForce 7200GS	EN7200GS HTD/256MB/DDRII				

#### Nvidia Chipset (Performance:Advanced)

Brand	ASUS	Gigabyte	ELSA	LEADTEK
GeForce 8400GS	EN8400GS HTP/256MB/DDRII			PX8400GS TDH/256MB/DDRII
GeForce 8500 GT		GV-NX85T256H/ 256MB/DDR2 GV-NX85T256HP/ 256MB/DDRIII	ELSA GLADIAC 850GT 256B2 2DT RH	
GeForce 8600 GT	EN8600GT/2DHT /256M			
GeForce 9500 GT		GV-N95TOC-512H		

# RECOMMENDATIONS

## NV3000 Hardware Recommendation List (cont.)

### PTZ Camera (visit our website support/download page for a complete list)

Brand	Product Number
AmericanDynamics	all products
Canon	VC-C4R
CD55	all products
DiGiDome	DRX -502A (DOH-240)
DMP23-H2	DMP23-H2
DynaColor	All products
Eastel	all products
ELMO	PTC -200C
Fastrax II	HID-2404
JVC	TK-C676 / TK-C675
Lilin	PIH 717X / 7000 / 7600 / PIH 7622/ 7622DH / 7635DH
MD101	all products
MicroJack-P	all products
NiceCam	all products
Panasonic	WW-CS850 / WW-CW860 / WW-CS950 / CS850B / CW860A / WW-CZ352
Pelco	Pelco-D/ Pelco-P
Philips	TC8560, TC700
SamSung	SCC-641
Sony	15-CZ45-1 /EVI-D70P
Yoko	all products

### USB to Serial Hubs (Could be compatible w/ POS Series, PTZ Camera, UPS Series)

Brand	Model	Capacity
MOXA	Uport 1410	

### Raid System

Brand	Product Number
Stardom	SR3610-2S-SB2
AVerDigi	RA4000e

### PDA Basic requirement

Notice: This feature is only available on version 5.1 or above AP. For customers who are using 5.0 version of AP, please visit the Support/Download page to download and upgrade to the latest version of AP

1. CPU: Arm architecture, for example, Intel Xscale.
2. OS: MS Window Pocket PC 2002/2003 or Mobile 5 and above.
3. GPRS or WLAN module is recommended.

### Windows Mobile Smartphone Basic Requirement

Notice: This feature is only available on version 5.7 or above AP. For customers who are using v.5.5, v5.1 or v5.0 version of AP please visit the Support/Download page to download and upgrade to the latest version of AP

1. CPU: Arm architecture, for example, Intel Xscale.
2. OS: Windows-base, Windows Mobile 2002/2003 for Smart Phone Edition or Windows Mobile version.
3. Network module such as WAP,GPRS,WLAN...etc is required .

### Symbian Smartphone Basic Requirement

Notice: This feature is only available on version 7.1 or above AP. For customers who are using v5.7, v.5.5, v5.1 or v5.0 version of AP please visit the Support/Download page to download and upgrade to the latest version of AP

1. OS:Symbian Smartphone
2. The OS needs to support JAVA MIDP 2.0(JAVA2 ME)
3. Network module such as WAP, GPRS, WLAN, etc is required.

\*Hardware recommendations are the minimum required hardware specifications for running our systems and not a guarantee to achieve the best performance of our DVR systems. Hardware specifications required to achieve the best performance of our DVR systems are subjected to different system settings and operation conditions.